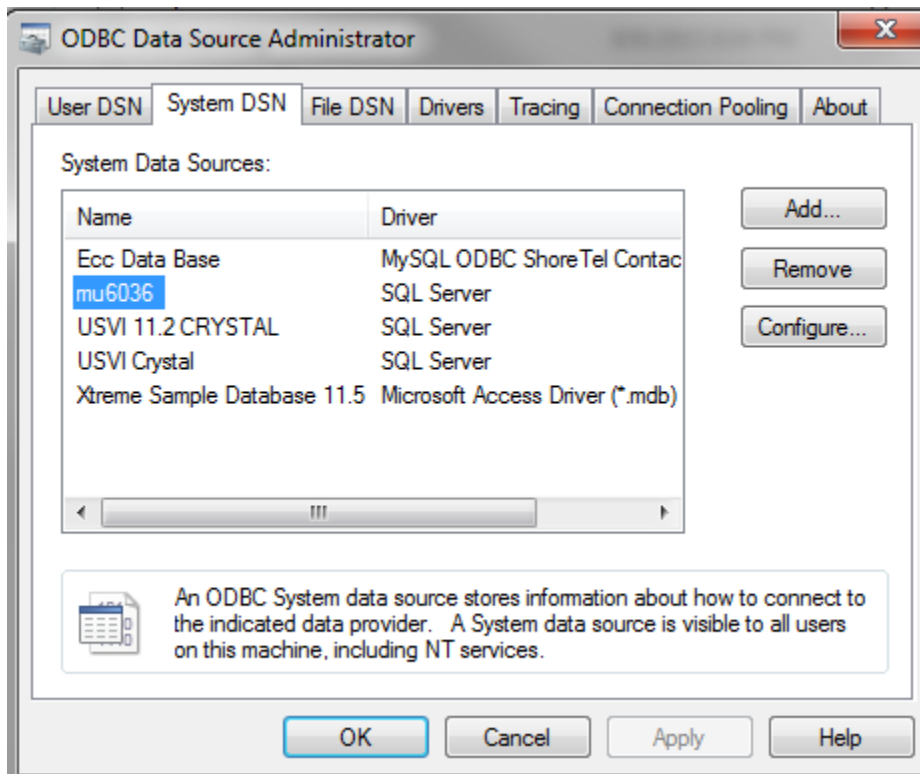


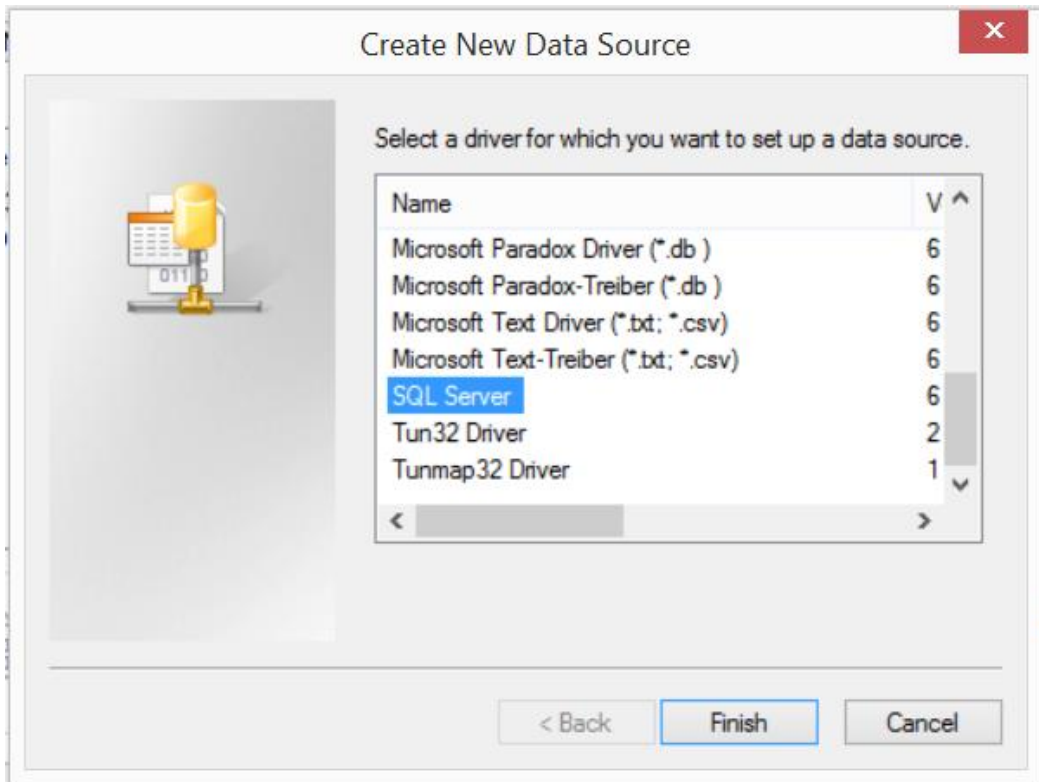
ODBC Setup Instructions

for Crystal Reports using ERP (Munis) SaaS (Reporting Database)

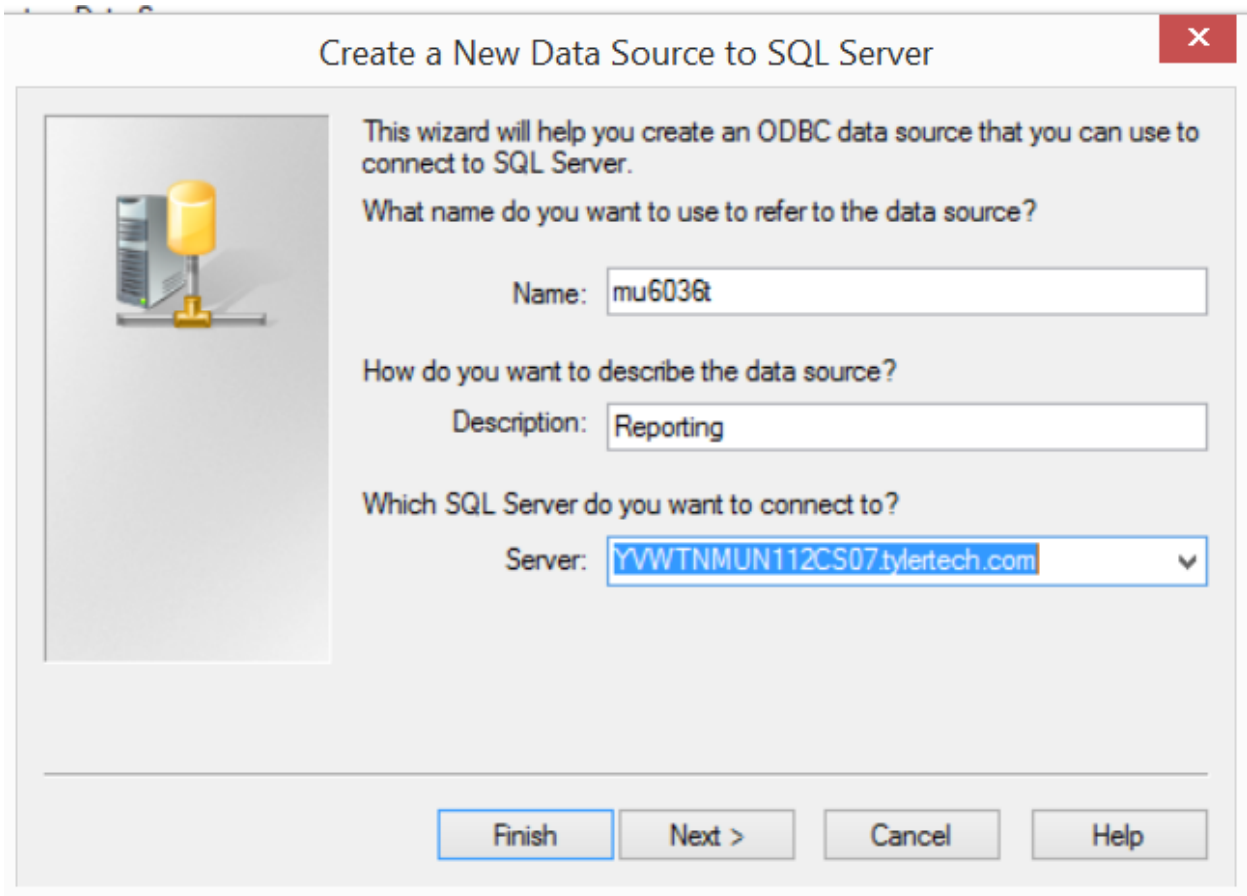
- Open ODBC Data Source Administrator (32-bit) program.
- Select System DSN tab.
- Click Add button



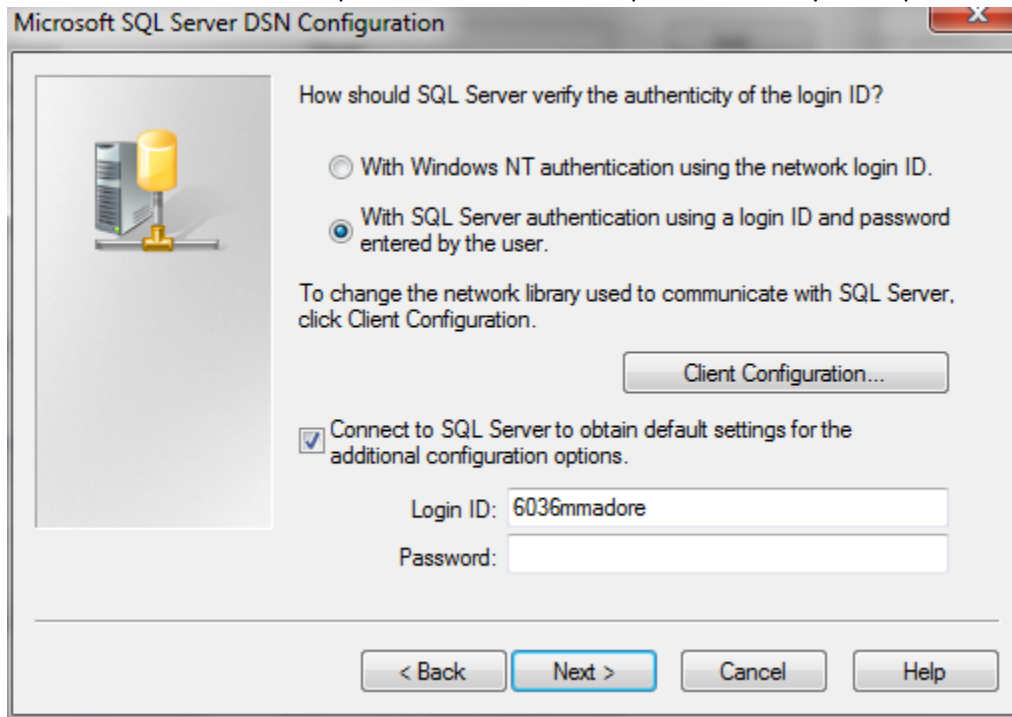
- Select SQL Server option and click Finish.



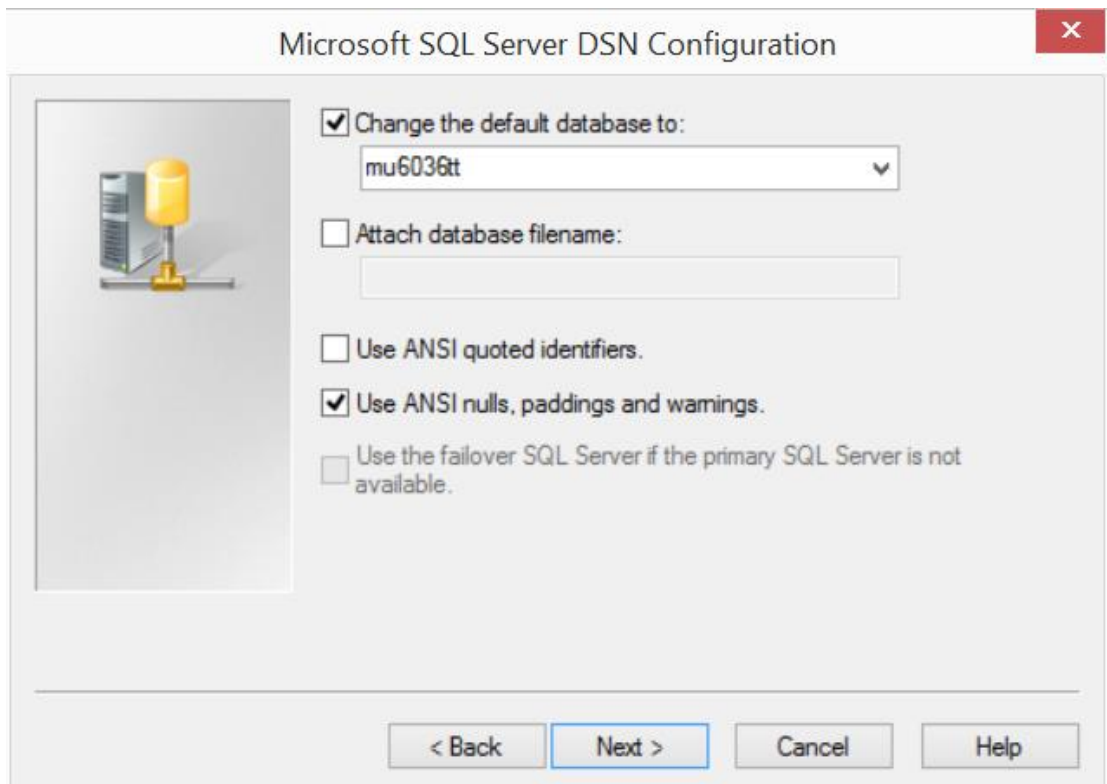
- Enter ODBC Connection name for Reporting database, description and server as shown below. Click Next.



- Select SQL Authentication option. Enter credentials provided for Crystal Reports. Click Next.



- Select checkbox and select mu6036t as default database. Click Next.



- Click Finish.

